

WIRING SCHEMATIC:

PEELER ELECTRICAL JUNCTION BOX

MODELS:
02820/02822
02920/02922

GENERAL SYSTEM SPECIFIC NOTES:

1. DRAWINGS 1029580 AND 1029581 ARE STANDARD NOTE AND LEGEND SHEETS AND SHOULD APPEAR AT THE END OF THIS DRAWING SET.

RELEVANT CONTROL SYSTEM PART NUMBERS	
VANMARK PN	DESCRIPTION
60-61097	ELECTRICAL CMPNTS, 24V AUTOLUBE, W/FDBK
1029580	CTRL STD, NOTES AND ABBREV
1029581	CTRL STD, SYMBOL LEGEND

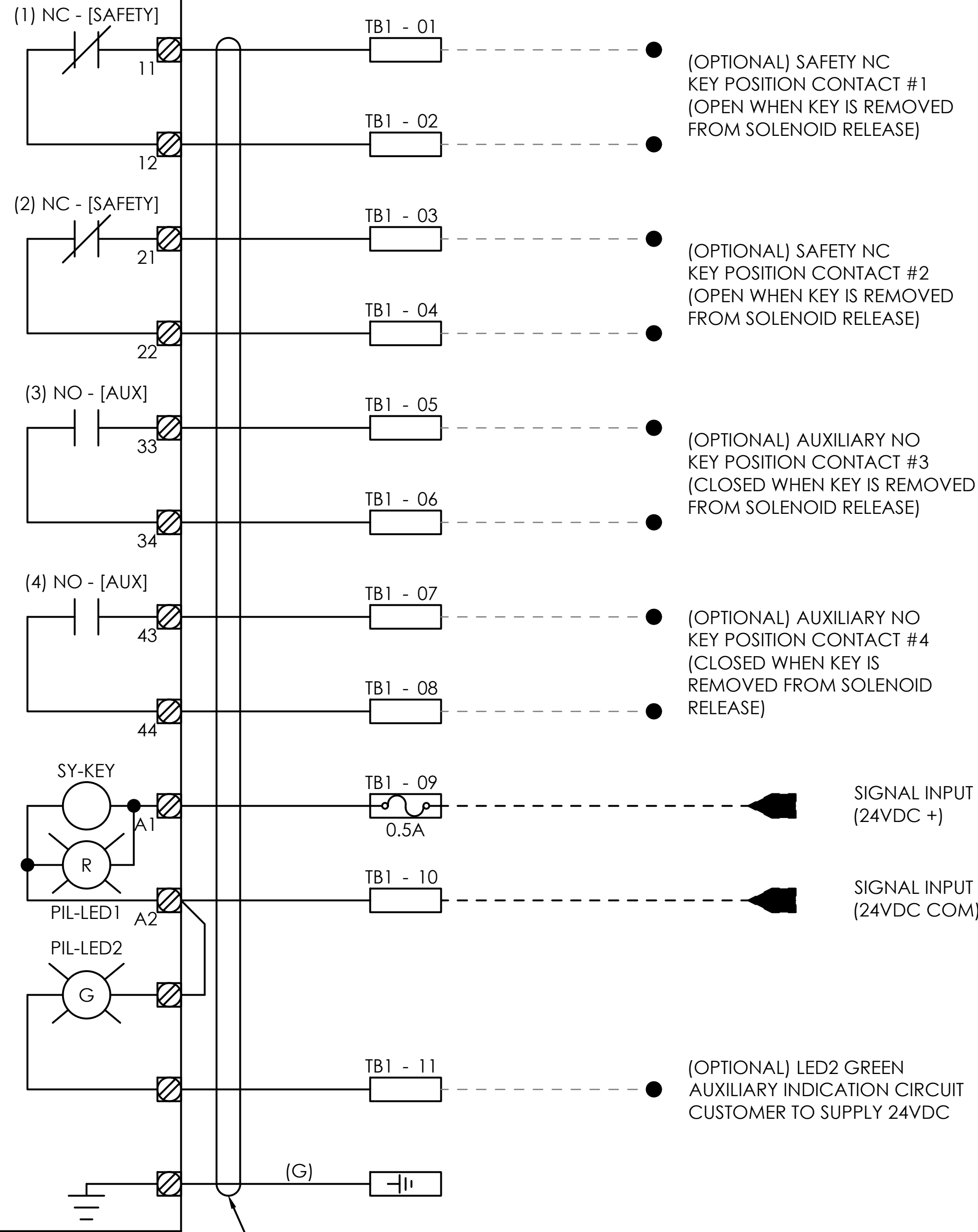
REVISIONS				UNLESS OTHERWISE SPECIFIED DIMENSIONS ARE IN INCHES TOLERANCES ARE: FRACTIONS DECIMALS ANGLES ±1/16" .001" .01°		THIS DRAWING & INFORMATION HEREIN IS CONFIDENTIAL & EXCLUSIVE PROPERTY OF VANMARK EQUIPMENT. THIS DOCUMENT & ITS CONTENTS MAY NOT BE REPRODUCED OR DISCLOSED IN WHOLE, OR IN PART, WITHOUT EXPRESS WRITTEN CONSENT.		DESCRIPTION: CTRL SCHEM, MANUAL, PEELER, 02820/02920 COVER PAGE	
REV	DESCRIPTION	DATE	BY	SIZE	D	APPROVED BY:	ZSE	REV.	ITEM NUMBER
A	INITIAL RELEASE - UPDATED AUTO LUBE PUMP & CIP TERM	05/01/24	NMJ					C	1029573
B	UPDATED DWG TO ANSI-D STANDARD TITLE BLOCK	05/09/24	NMJ						
C	SCHEMATIC CHANGE FOR NEW BUTTON AND TIMER RELAY	01/14/25	NMJ						



SCALE: NTS
SHEET: 1 OF 5

TRAP KEY
SOLENOID RELEASE UNIT
(STANDARD)

TRAP KEY
SOLENOID RELEASE UNIT



MULTI-CONDUCTOR CABLE
NUMBERS ON CABLE
MATCH TERMINAL BLOCK
NUMBERS

SHEET NOTES:

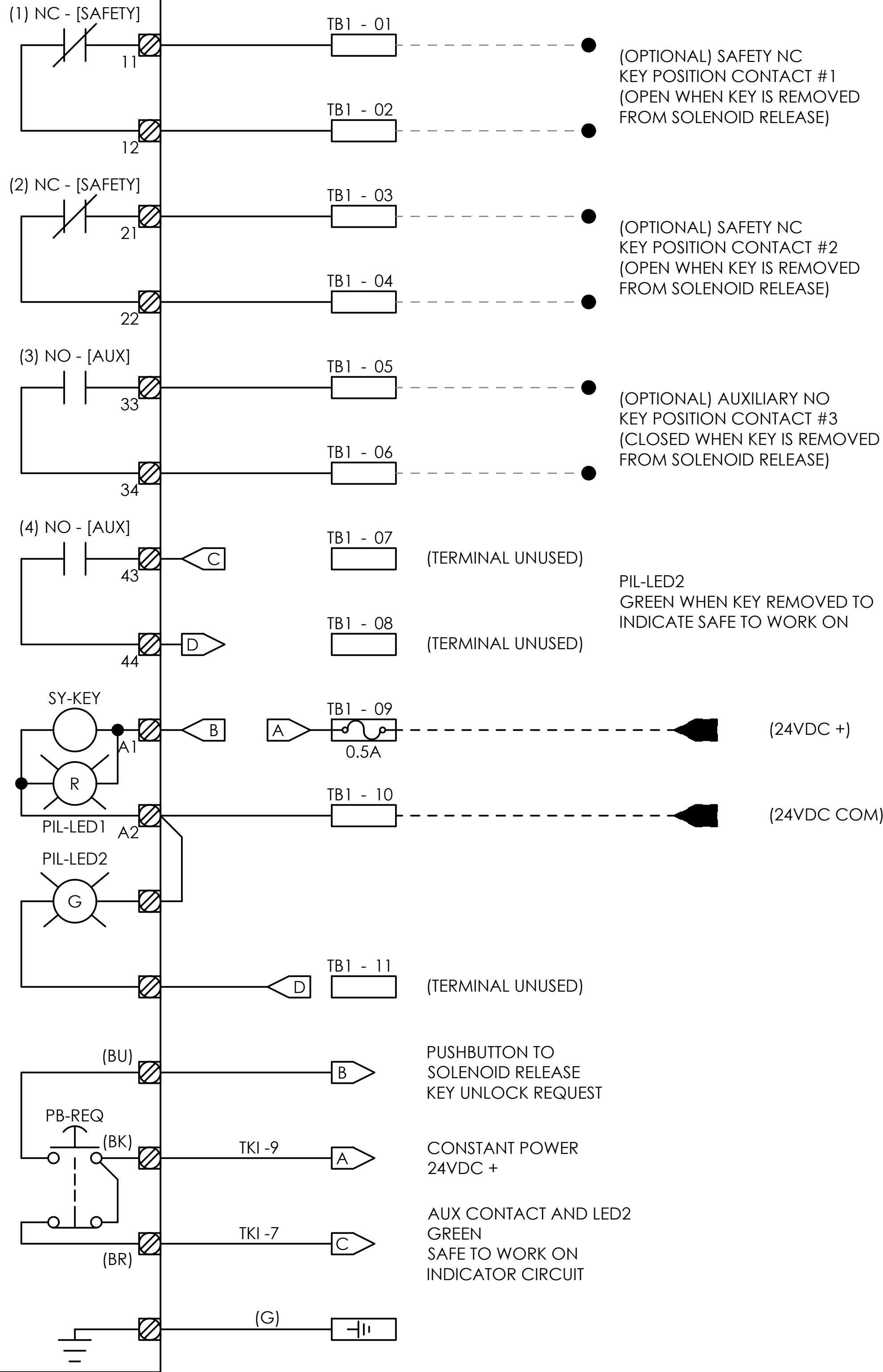
- VANMARK RECOMMENDS USING AT LEAST 1 SET OF INTERLOCK KEY CONTACTS TO DISABLE THE PEELER DRIVE MOTOR(S).
- VANMARK DOES NOT TAKE LIABILITY FOR SAFETY PROTOCOLS AND / OR HAZARDS RELATED TO MISUSE / NON-RECOMMENDED WIRING OF TKI.

NOTE FROM PART DATA SHEET:

- APPLYING 24VDC TO A1 AND A2 WILL:
- ENERGIZE THE SOLENOID AND ALLOW THE KEY TO BE REMOVED
 - CONTACTS 11/12 AND 21/22 WILL OPEN (SAFETY CONTACTS)
 - CONTACTS 33/34 AND 43/44 WILL CLOSE (AUXILIARY CONTACTS)
 - LED1 (RED) WILL STAY ILLUMINATED
- DE-ENERGIZING A1 AND A2 WILL:
- CAUSE LED1 (RED) TO GO OFF
 - ALLOW KEY TO BE INSERTED AND TURNED TO THE TRAPPED POSITION
 - CONTACTS 11/12 AND 21/22 WILL CLOSE, IF KEY IS IN TRAPPED POSITION
 - CONTACTS 33/34 AND 43/44 WILL OPEN, IF KEY IS IN TRAPPED POSITION

TRAP KEY
SOLENOID RELEASE UNIT
(W/ OPTIONAL UNLOCK REQUEST PUSHBUTTON)

TRAP KEY
SOLENOID RELEASE UNIT



REVISIONS			
REV	DESCRIPTION	DATE	BY
A	INITIAL RELEASE - UPDATED AUTO LUBE PUMP & CIP TERM	05/01/24	NMJ
B	UPDATED DWG TO ANSI-D STANDARD TITLE BLOCK	05/09/24	NMJ
C	SCHEMATIC CHANGE FOR NEW BUTTON AND TIMER RELAY	01/14/25	NMJ

UNLESS OTHERWISE SPECIFIED
DIMENSIONS ARE IN INCHES
TOLERANCES ARE:
FRACTIONS DECIMALS ANGLES
±.125 ±.010 ±.020



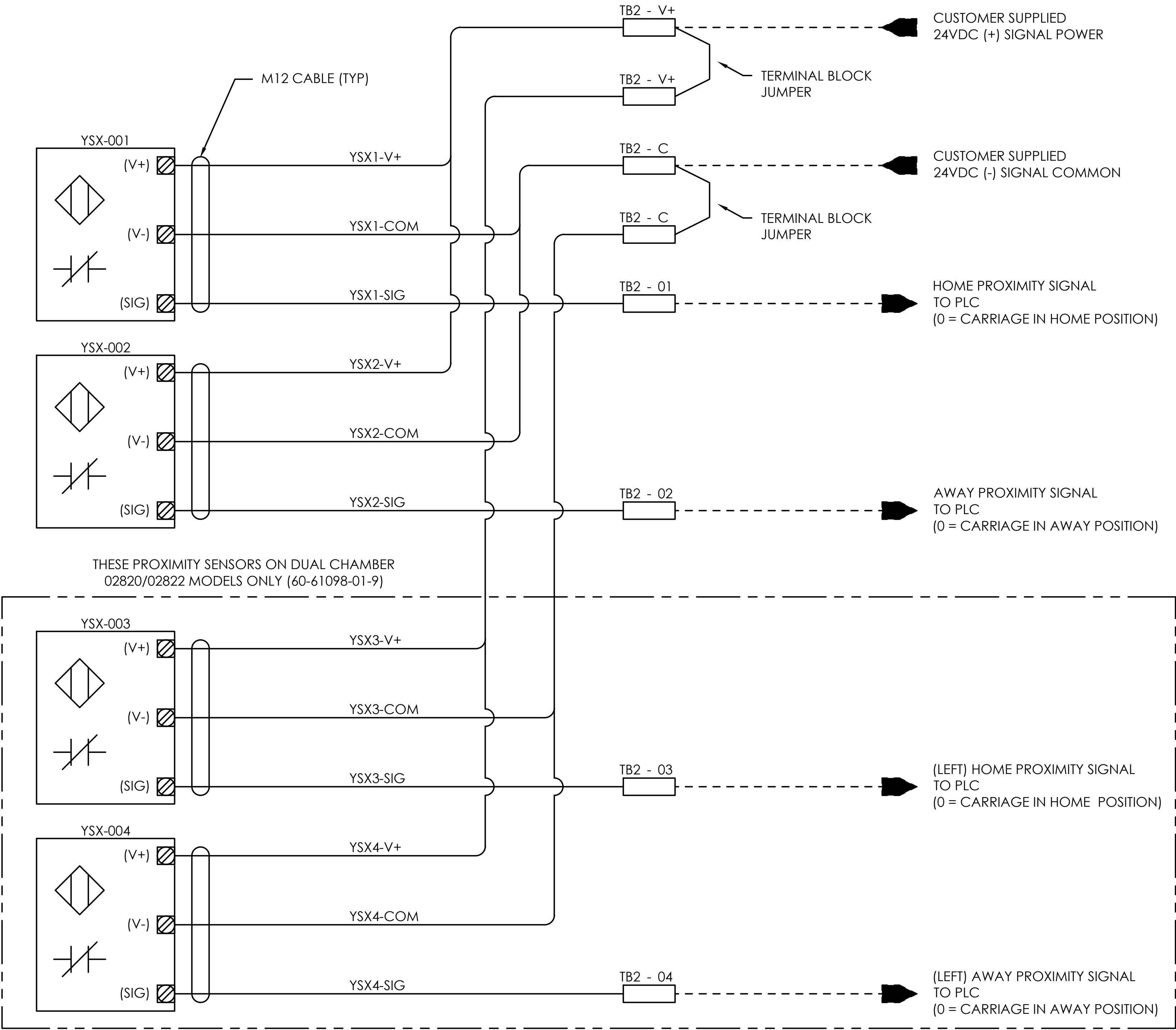
VANMARK EQUIPMENT LLC
www.vanmark.com

DESCRIPTION:
CTRL SCHEM, MANUAL, PEELER, 02820/02920
TRAP KEY TERMINAL GROUP

REV. C ITEM NUMBER 1029573

SCALE: NTS SHEET: 2 OF 5

OPTIONAL CIP

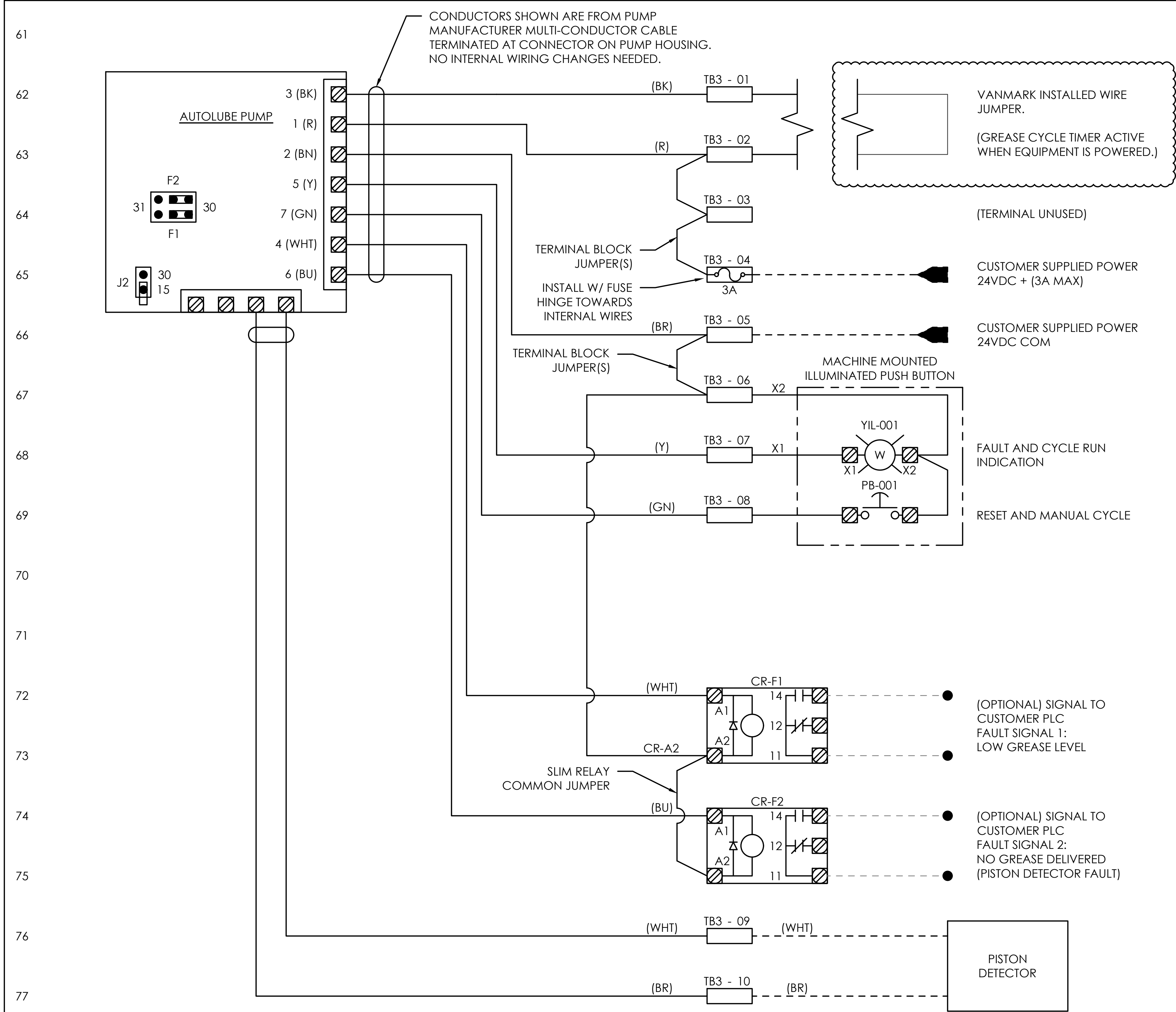


SHEET NOTES:

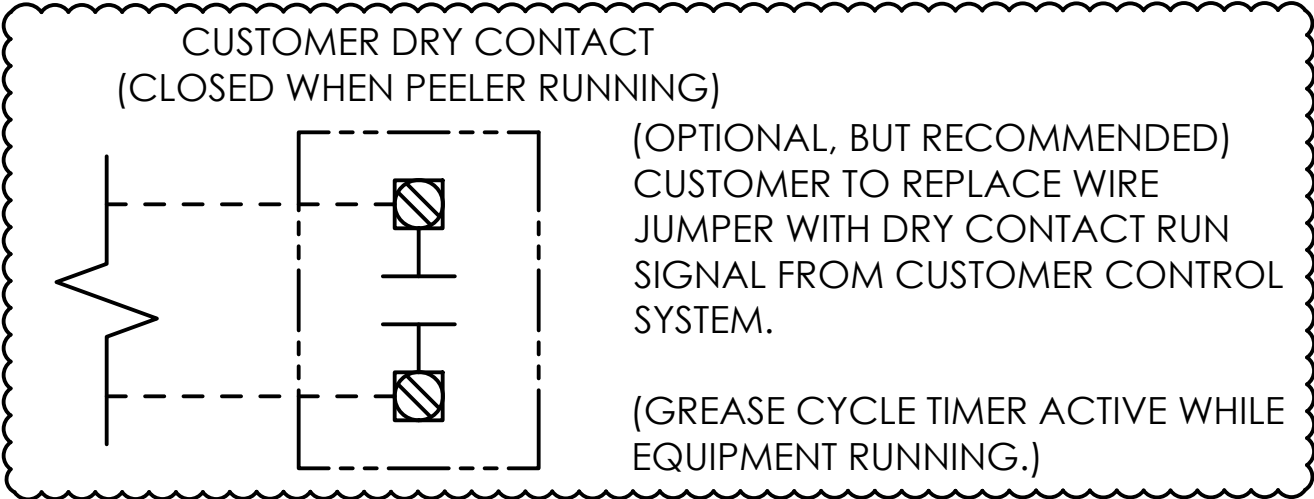
- THIS SHEET SHOWS CONNECTIONS INTENDED FOR PEELERS WITH THE OPTIONAL CIP PACKAGE INSTALLED. THESE TERMINAL BLOCKS MAY BE PRESENT, BUT NOT WIRED IN PEELERS WHICH DO NOT HAVE THE OPTIONAL CIP PACKAGE.
- TERMINAL BLOCKS "V+" AND "C" HAVE 3 CONNECTION POINTS WITH THE DUAL CONNECTION SIDE FACING INTERNAL WIRING.

REVISIONS				UNLESS OTHERWISE SPECIFIED DIMENSIONS ARE IN INCHES TOLERANCES ARE: FRACTIONS DECIMALS ANGLES ±.125 ±.010 ±.020				THIS DRAWING & INFORMATION HEREIN IS CONFIDENTIAL & EXCLUSIVE PROPERTY OF VANMARK EQUIPMENT. THIS DOCUMENT & ITS CONTENTS MAY NOT BE REPRODUCED OR DISCLOSED IN WHOLE, OR IN PART, WITHOUT EXPRESS WRITTEN CONSENT.		DESCRIPTION: CTRL SCHEM, MANUAL, PEELER, 02820/02920 (OPTIONAL) CIP TERMINAL GROUP	
REV	DESCRIPTION	DATE	BY	SIZE	D	⊙	◁	REV.	ITEM NUMBER		
A	INITIAL RELEASE - UPDATED AUTO LUBE PUMP & CIP TERM	05/01/24	NMJ					C	1029573		
B	UPDATED DWG TO ANSI-D STANDARD TITLE BLOCK	05/09/24	NMJ	APPROVED BY: ZSE		SCALE: NTS		SHEET: 3 OF 5			
C	SCHEMATIC CHANGE FOR NEW BUTTON AND TIMER RELAY	01/14/25	NMJ								





OR



STANDARD:


PLASTIC
ILLUMINATED
PUSHBUTTON

SHEET NOTES:

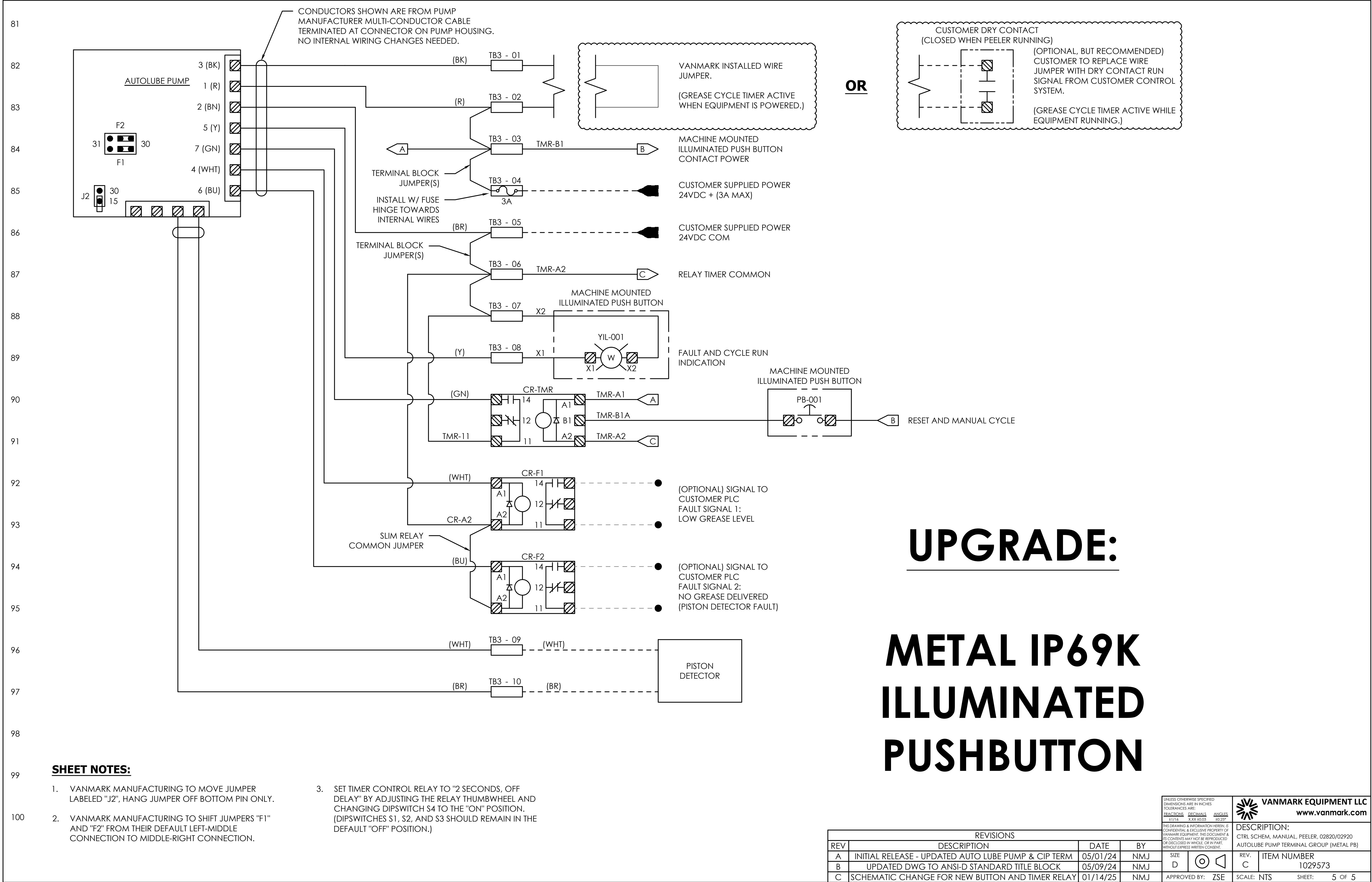
- VANMARK MANUFACTURING TO MOVE JUMPER LABELED "J2", HANG JUMPER OFF BOTTOM PIN ONLY.
- VANMARK MANUFACTURING TO SHIFT JUMPERS "F1" AND "F2" FROM THEIR DEFAULT LEFT-MIDDLE CONNECTION TO MIDDLE-RIGHT CONNECTION.

REVISIONS				DESCRIPTION:	
REV	DESCRIPTION	DATE	BY	REV.	ITEM NUMBER
A	INITIAL RELEASE - UPDATED AUTO LUBE PUMP & CIP TERM	05/01/24	NMJ	C	1029573
B	UPDATED DWG TO ANSI-D STANDARD TITLE BLOCK	05/09/24	NMJ		
C	SCHEMATIC CHANGE FOR NEW BUTTON AND TIMER RELAY	01/14/25	NMJ		


UNLESS OTHERWISE SPECIFIED DIMENSIONS ARE IN INCHES TOLERANCES ARE: FRACTIONS DECIMALS ANGLES ±.125 ±.010 ±.020	THIS DRAWING & INFORMATION HEREIN IS CONFIDENTIAL & EXCLUSIVE PROPERTY OF VANMARK EQUIPMENT. THIS DOCUMENT & ITS CONTENTS MAY NOT BE REPRODUCED OR DISCLOSED IN WHOLE, OR IN PART, WITHOUT EXPRESS WRITTEN CONSENT.	APPROVED BY: ZSE	SCALE: NTS	SHEET: 4 OF 5
---	--	------------------	------------	---------------

**VANMARK EQUIPMENT LLC**
www.vanmark.com

CTRL SCHEM, MANUAL, PEELER, 02820/02920
AUTOLUBE PUMP TERMINAL GROUP (PLASTIC PB)



REVISIONS				UNLESS OTHERWISE SPECIFIED DIMENSIONS ARE IN INCHES TOLERANCES ARE:		THIS DRAWING & INFORMATION HEREIN IS CONFIDENTIAL & EXCLUSIVE PROPERTY OF VANMARK EQUIPMENT. THIS DOCUMENT & ITS CONTENTS MAY NOT BE REPRODUCED OR DISCLOSED IN WHOLE, OR IN PART, WITHOUT EXPRESS WRITTEN CONSENT.		DESCRIPTION:	
REV	DESCRIPTION	DATE	BY	FRACTIONS	DECIMALS	ANGLES	APPROVED BY: ZSE	REV.	ITEM NUMBER
A	INITIAL RELEASE - UPDATED AUTO LUBE PUMP & CIP TERM	05/01/24	NMJ	1/16"	0.0005	25.25°		C	1029573
B	UPDATED DWG TO ANSI-D STANDARD TITLE BLOCK	05/09/24	NMJ						
C	SCHEMATIC CHANGE FOR NEW BUTTON AND TIMER RELAY	01/14/25	NMJ						
				SIZE D				SCALE: NTS	SHEET: 5 OF 5

**VANMARK EQUIPMENT LLC**
www.vanmark.com